

TUBI per BANCO A FUSI

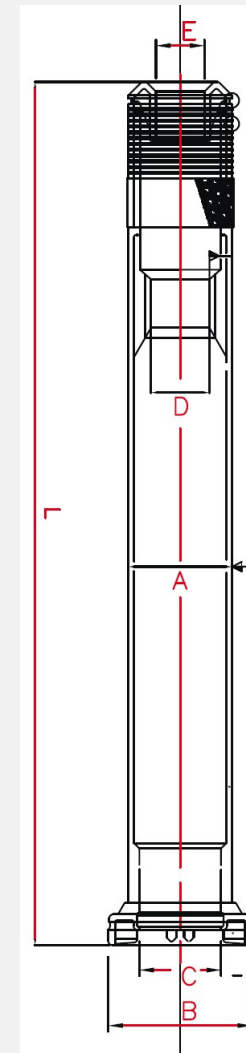
ROVING TUBES

Scaglia
1838



IMPRESA STORICA D'ITALIA

MACHINE MANUFACTURER	MACHINE MODEL	L [mm]	φ A [mm]	φ B [mm]	φ C [mm]	φ D [mm]	φ E [mm]
Electro-Jet		440	48	60	39.8	18.05	22
Grossenheimer		450	48	56	40.3	25.2	25.2
Howa		445	45	60	37.2		25.15
	RDM 16 / RME	452	45	60	37.2		25.15
Marzoli	FT6/D FT7/D	446	48	74	42	30.1	25
	BCX16 / FT1	446	53.5	74	42	30.1	25
NSC	BM 12 13 14	395	60	60	40.2	37	25.2
	BM20	450	48	60	35	35	25.2
Rieter	F19 / F20 / F39 / F40	440	48	60	39.8	18.05	22
		446	48	74	42	30.1	25
		446	53.5	74	42	30.1	25
S. Andrea		425	60	75	40	37	25
Toyoda	FL16 / FL100	445	45.5	60	39.35		22.2
	FL16 / FL100 with top brim	452	45.5	60	39.35		22.2
	FL16 / FL100 for automatic doffing	452	45.5	60	39.35		22.2
	FL200 for automatic doffing	445	47.5	60	39.35		22.2
Zinser	660	450	48	66	40.3		25.2
	668	450	56	72	50.3	46.2	25.2
	Speed 5A / 670	450	56	72	50.3	46.2	25.2
Lakshmi		450	48	66	40.3		25.2



The use of top quality materials, the compliance to the strictest dimensional tolerances, and the constant careful eye on the newest tendencies and evolutions in material and manufacturing techniques mean that Scaglia's products ensure up-to-date top quality, precision, absolute reliability and the highest standards of performances and durability.

This made the Scaglia brand despite its age, always the trendiest on the market